

WHY CHOOSE US?

Accredited by ACR (American College of Radiology)

On-site Radiologist(s)

Board Certified Sub-Specialized Radiologist(s)

Ability to consult with radiologist in person

Onsite Nurses (ACLS/PALS certified)

Compare to previous Exams

Largest Archive of Images in Tallahassee Area

Capability to burn CD's for patient(s) and physicians

Images available to physician's offices via internet

Hand delivered reports

Anesthesia

Extended hours

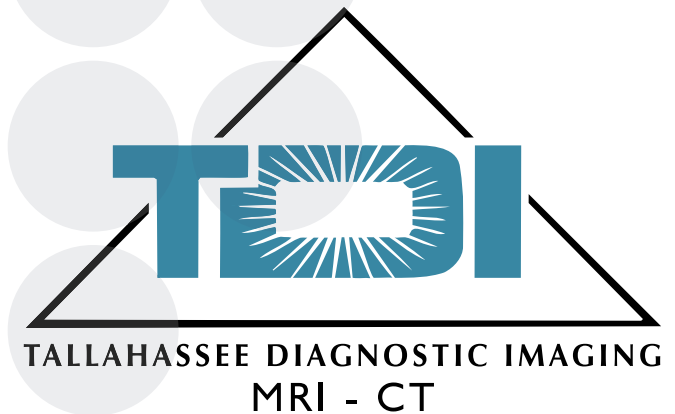
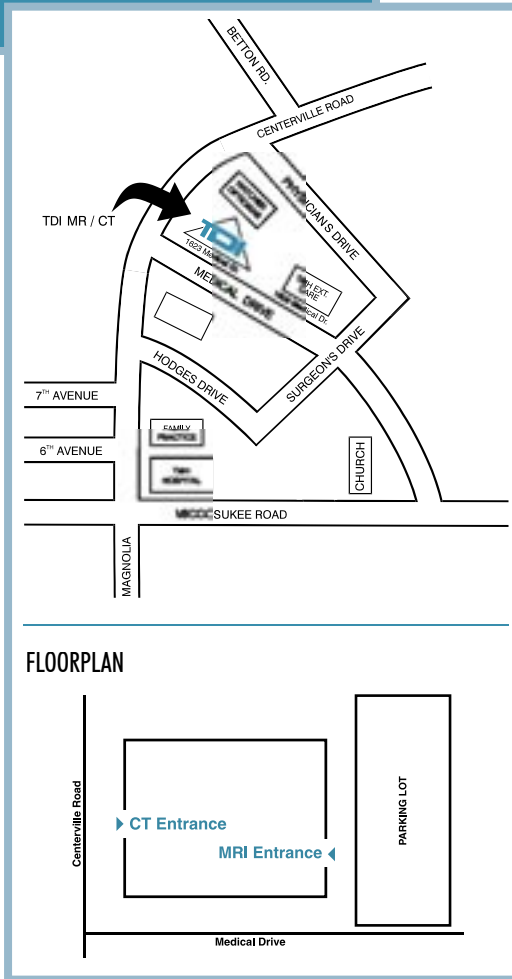
In-house transcription

Digital Dictation Line

Newly Renovated 22,000 sq ft. Facility



TDI is conveniently located one block north of Tallahassee Memorial Hospital on the corner of Centerville Road and Medical Drive.



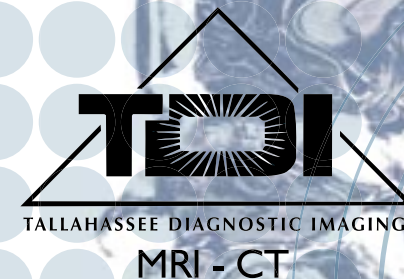
MRI

MAGNETIC RESONANCE IMAGING

Every Picture Tells a Story



1623 Medical Drive
Tallahassee, Florida 32308
(850) 656-2261 Main
(850) 671-6425 File Room
(850) 671-1912 Fax
www.tdic.org



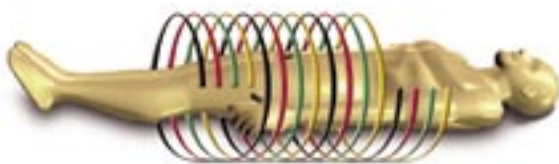
MRI IN GENERAL

Magnetic Resonance Imaging

Developed in the 1980's, Magnetic Resonance Imaging utilizes computers & magnetic fields to provide safe and non-invasive images of the human anatomy. Unlike X-ray & CT scans, MRI uses no radiation.

MRI uses powerful, superconducting magnets which generate a magnetic field 30,000 to 60,000 times stronger than that of the Earth. The strength of the MRI is measured in units called Tesla.

1 Tesla = 20,000 X earth's magnetic pull



MRI utilizes the magnetic field generated to create images of the body.



ONI 1.0 Extremity Magnet

OUR EQUIPMENT

Our Magnets

3T (3 Tesla)

- The strongest magnet available in this area
- Superior image quality
- Reduced exam time

High Field Open MRI (.7 Tesla)

- The best of both worlds
- Open magnet to accommodate pediatric, claustrophobic & larger patients (up to 500 lbs.)
- Great image quality

1.5 Tesla Magnet

- TDI has four 1.5 Tesla magnets. This allows us to schedule patients for same day or next day appointments.

ONI Extremity Magnet (1 Tesla)

- The ONI Extremity Magnet allows the patient to recline comfortably in a chair, without the need to enter the bore of the magnet.

What Do I Need to Tell My Physician or MRI Technologist?

Patients with a heart pacemaker, metal implants, or metal chips or clips in or around the eyes cannot be scanned with MRI because of the effect of the magnet on these objects.

How Do I Prepare for an MRI?

All metallic objects on the body are removed prior to obtaining a MRI scan. Occasionally, patients will be given sedative medication* to decrease anxiety and relax the patient during the scan.

* Prescribed by your physician

Do I Need an Injection for my MRI?

Occasionally, patients require an injection of contrast media intravenously to enhance the images.

Can I Move While I am Getting an MRI?

It is important to remain as still as possible during the MRI. However, if you should become uncomfortable or need to speak, the intercom and window arrangement in the room assures the MRI staff can see and hear you during your study.

After Your MRI.

After your MRI scan is completed, the technologist transfers your images from the MRI system to X-ray film or to our PACS unit.

A local board certified radiologist interprets your study and a report is sent to your physician. Your physician will receive your report within three to four working days.



Open MRI Machine

Now Offering Anesthesia*

TDI has on-site board certified anesthesiologists to administer anesthesia for those patients who are either too young or too uncomfortable to tolerate the study.

* This is a scheduled service that will be provided upon advanced request by the referring healthcare provider.